

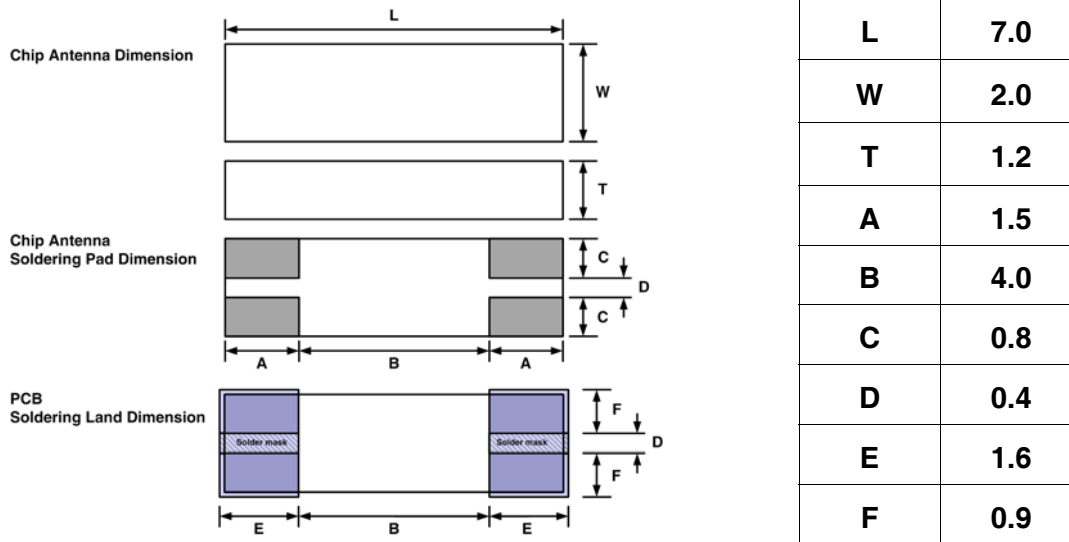
Dielectric Chip Antenna



■ P/N : ODBTPTR7020

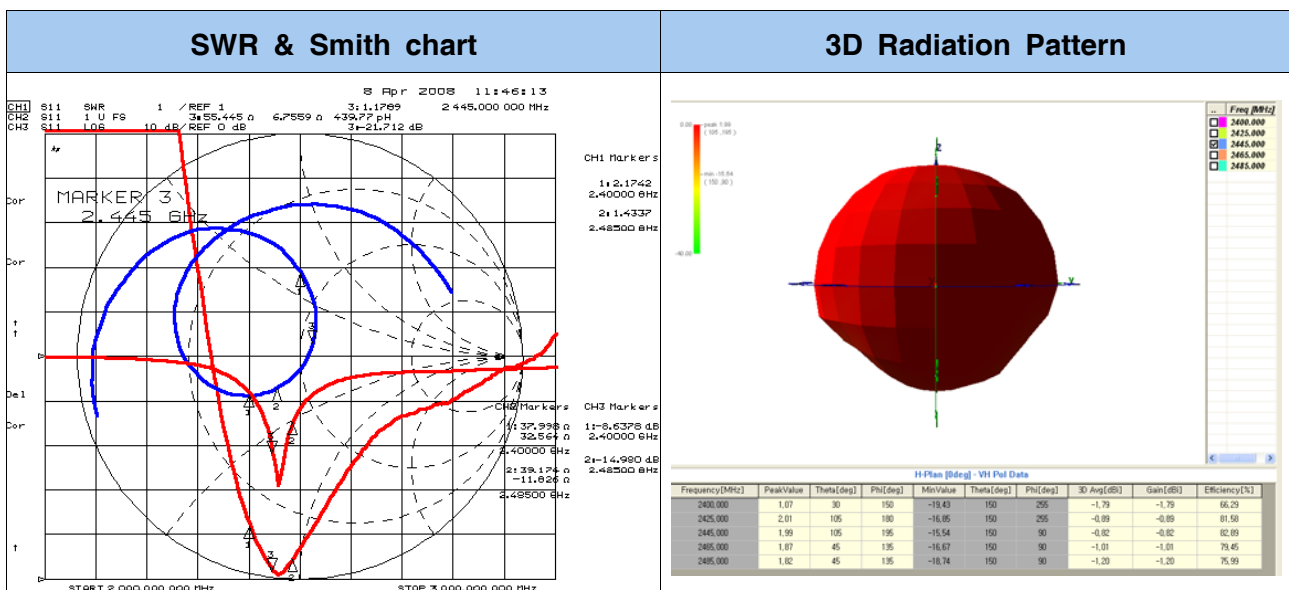
This specification covers the dielectric chip antenna ODBTPTR7020 used in Bluetooth

■ MECHANICAL DIMENSION (unit : mm, tolerance : ± 0.1)



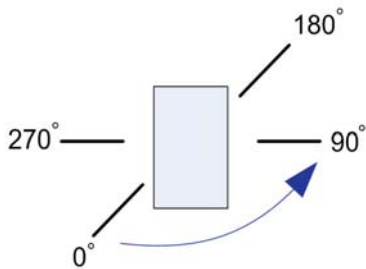
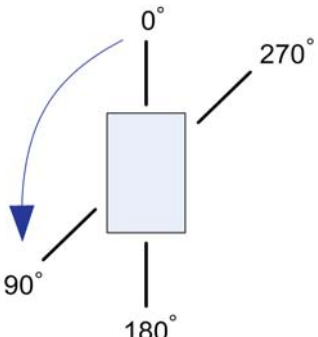
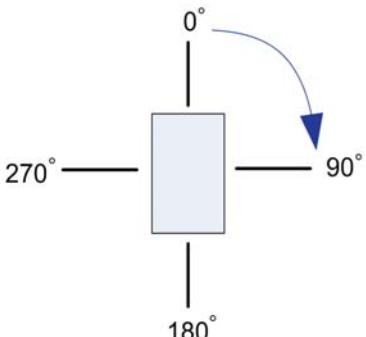
■ ELECTRICAL CHARACTERISTICS

ITEM		SPEC				
Frequency Range		2400 ~ 2485 MHz				
VSWR		3:1 Max				
Polarization		Linear				
Frequency [MHz]		2400	2425	2445	2465	2485
Gain [dBi]	Peak	1.07	2.01	1.99	1.87	1.82
	Average	-1.79	-0.89	-0.82	-1.01	-1.20
Efficiency [%]		66.29	81.58	82.89	79.45	75.99



ELECTRICAL CHARACTERISTICS (2D)

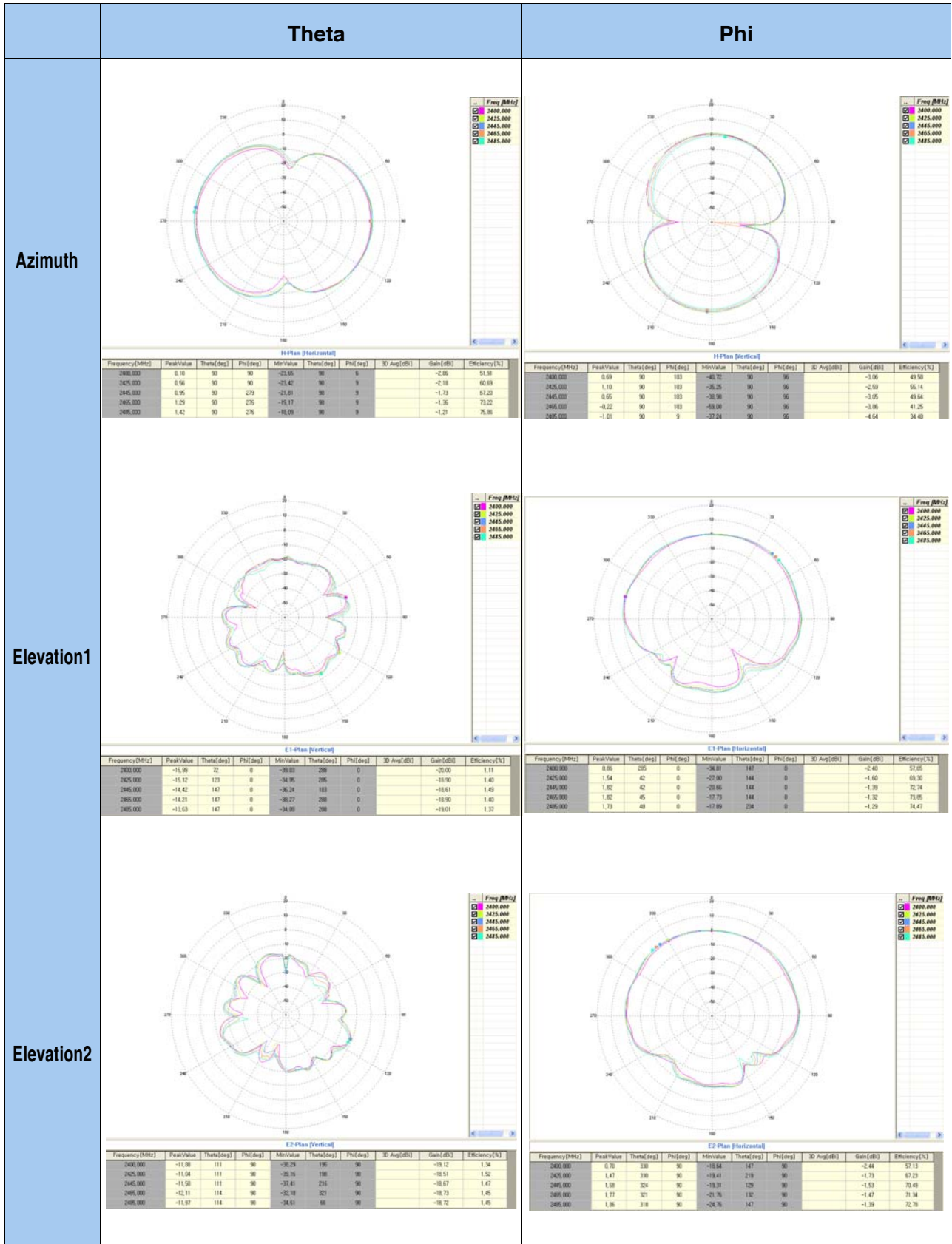
2D Measurement				
Gain	Azimuth	Theta	Peak	1.29
			Average	-1.21
		Phi	Peak	1.10
			Average	-2.59
	Elevation 1	Theta	Peak	-14.42
			Average	-18.61
		Phi	Peak	1.73
			Average	-1.29
	Elevation 2	Theta	Peak	-11.04
			Average	-18.51
		Phi	Peak	1.86
			Average	-1.39

Azimuth Plane	Elevation1 Plane	Elevation2 Plane
		
Theta	Vertical field of measured plane	
Phi	Horizontal field of measured plane	

Dielectric Chip Antenna



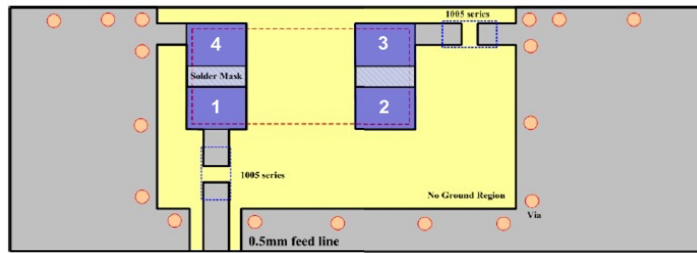
2D RADIATION PATTERN



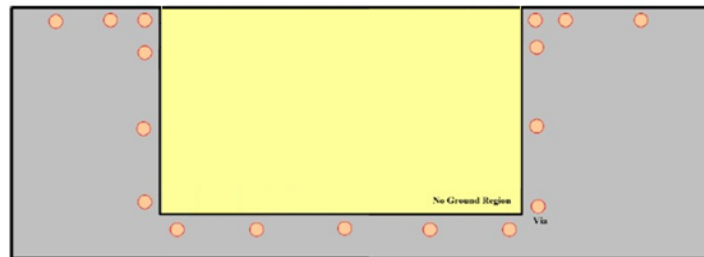
Dielectric Chip Antenna



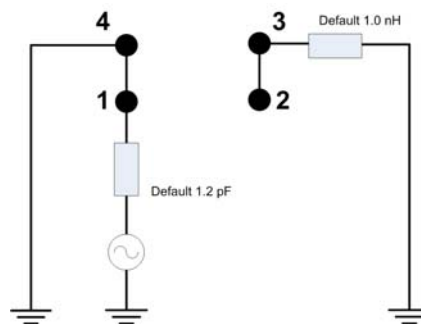
■ FEEDING METHOD (unit : mm, tolerance : ± 0.05)



< Top View >



< Bottom View >



< Default Condition Equivalent Circuit >

■ AutoCAD Drawing of Reference PCB Design

