

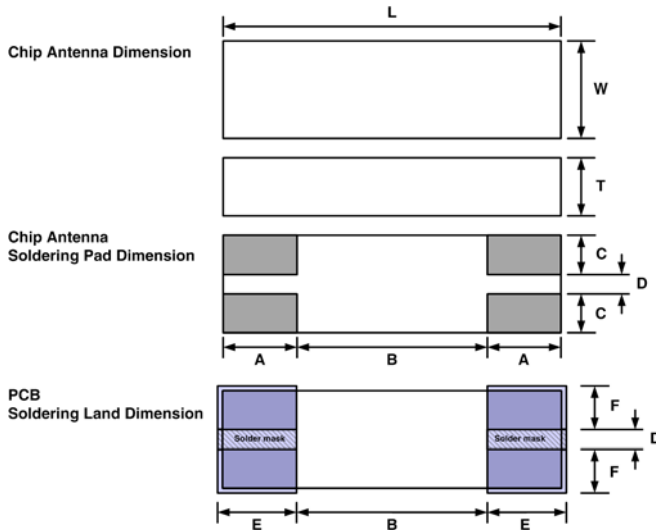
Dielectric Chip Antenna



■ P/N : ODBTPTR8020

This specification covers the dielectric chip antenna ODBTPTR8020 used in Bluetooth

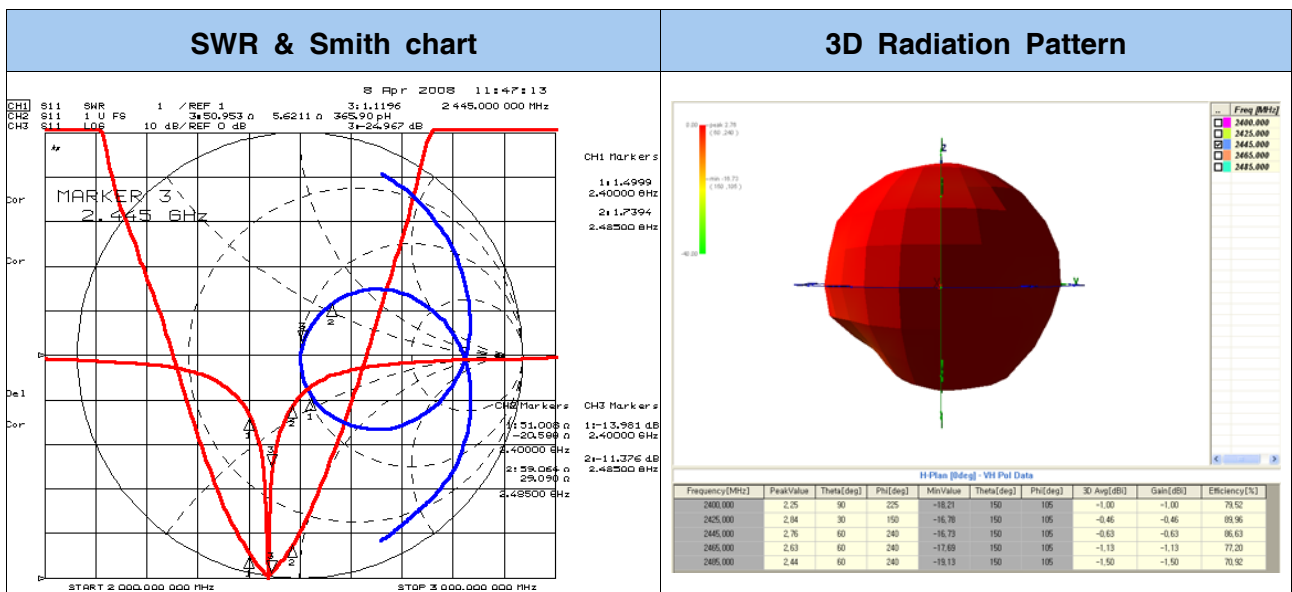
■ MECHANICAL DIMENSION (unit : mm, tolerance : ± 0.1)



L	8.0
W	2.0
T	1.2
A	1.5
B	5.0
C	0.8
D	0.4
E	1.6
F	0.9

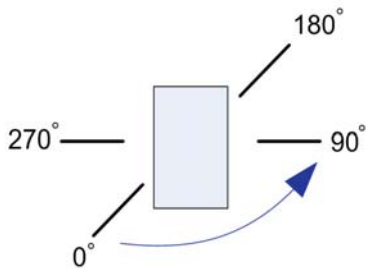
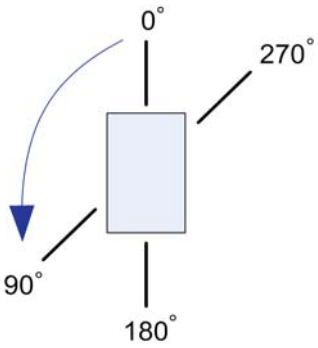
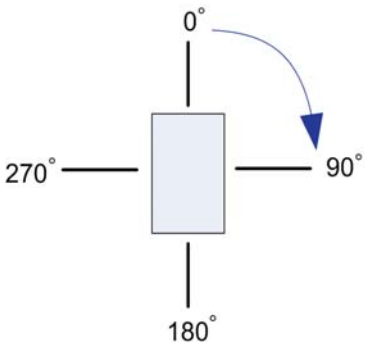
■ ELECTRICAL CHARACTERISTICS

ITEM		SPEC				
Frequency Range		2400 ~ 2485 MHz				
VSWR		3:1 Max				
Polarization		Linear				
Frequency [MHz]		2400	2425	2445	2465	2485
Gain [dBi]	Peak	2.25	2.84	2.76	2.63	2.44
	Average	-1.00	-0.46	-0.63	-1.13	-1.50
Efficiency [%]		79.52	89.96	86.63	77.20	70.92



ELECTRICAL CHARACTERISTICS (2D)

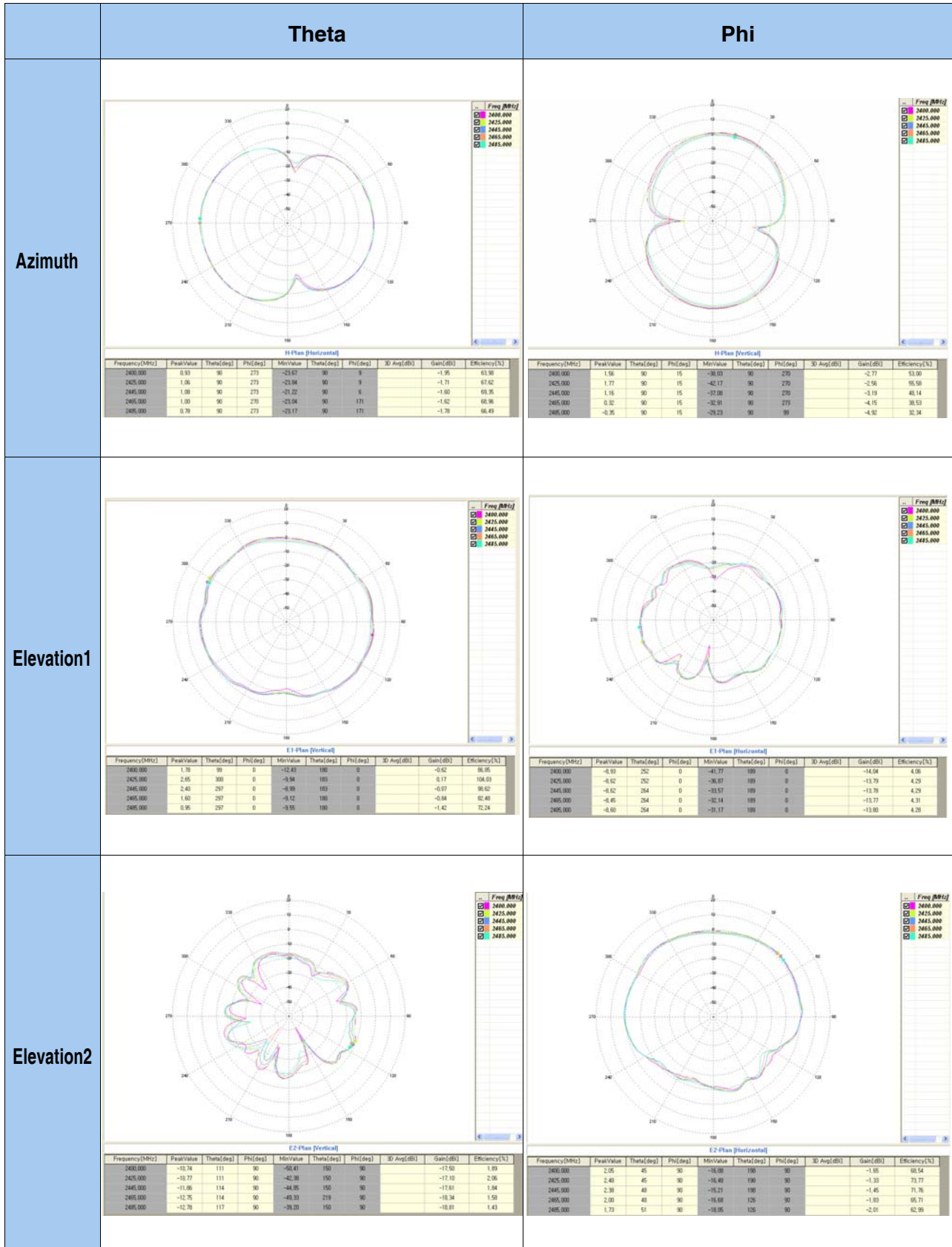
2D Measurement				
Gain	Azimuth	Theta	Peak	1.08
			Average	-1.60
		Phi	Peak	1.77
			Average	-2.56
	Elevation 1	Theta	Peak	2.65
			Average	0.17
		Phi	Peak	-8.45
			Average	-13.77
	Elevation 2	Theta	Peak	-10.77
			Average	-17.10
		Phi	Peak	2.48
			Average	-1.33

Azimuth Plane	Elevation1 Plane	Elevation2 Plane
		
Theta	Vertical field of measured plane	
Phi	Horizontal field of measured plane	

Dielectric Chip Antenna



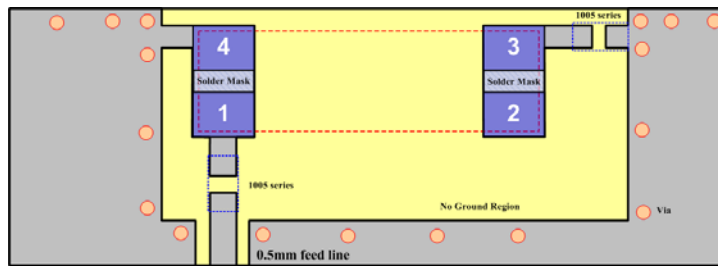
2D RADIATION PATTERN



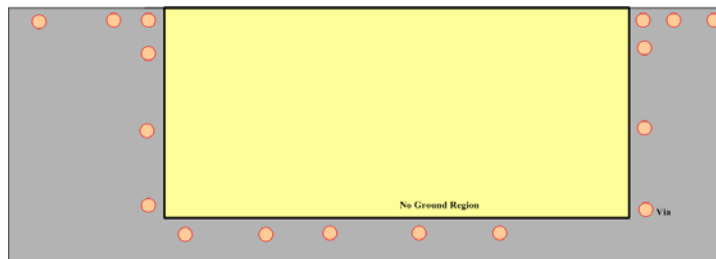
Dielectric Chip Antenna



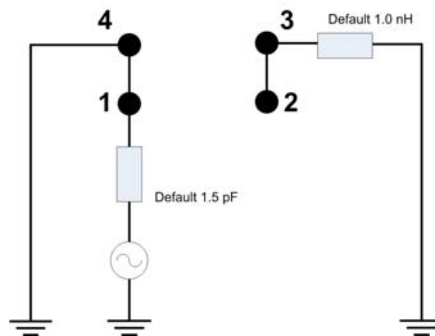
FEEDING METHOD (unit : mm, tolerance : ± 0.05)



< Top View >



< Bottom View >



< Default Condition Equivalent Circuit >

AutoCAD Drawing of Reference PCB Design

