

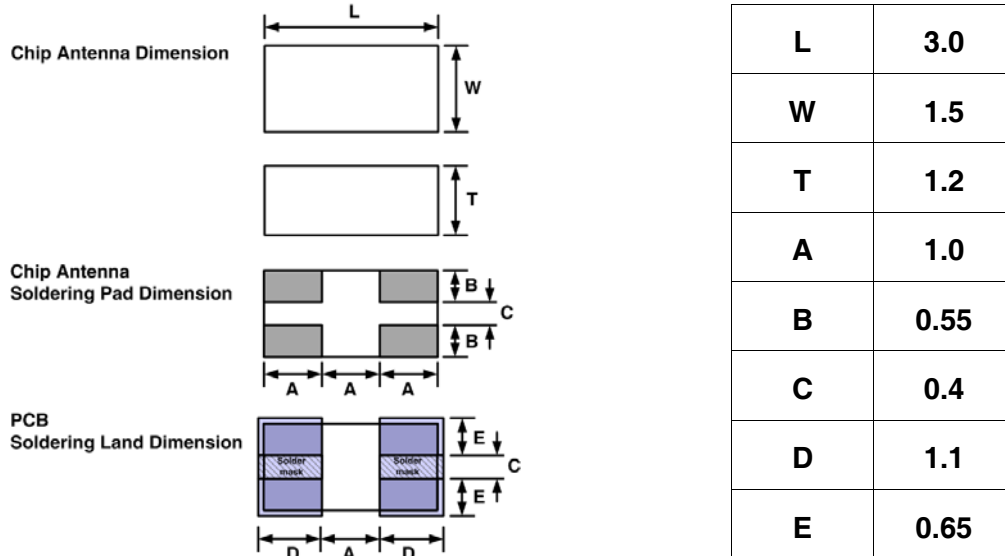
Dielectric Chip Antenna



■ P/N : ODBTPTR3015

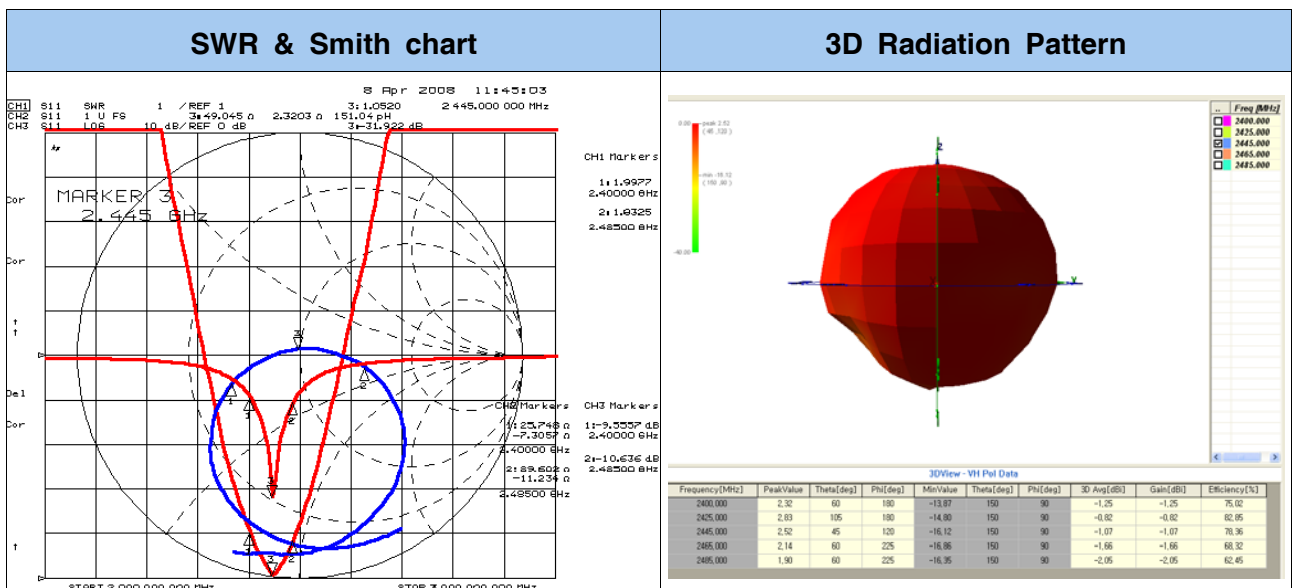
This specification covers the dielectric chip antenna ODBTPTR3015 used in Bluetooth

■ MECHANICAL DIMENSION (unit : mm, tolerance : ± 0.1)



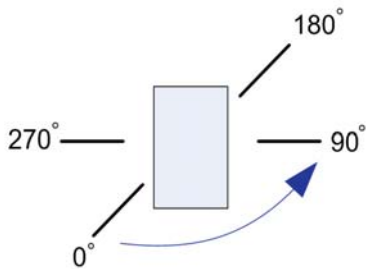
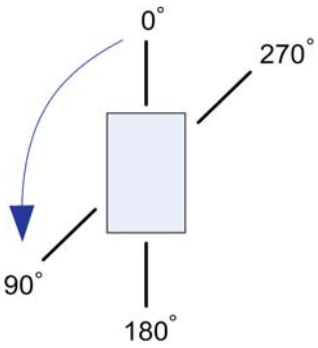
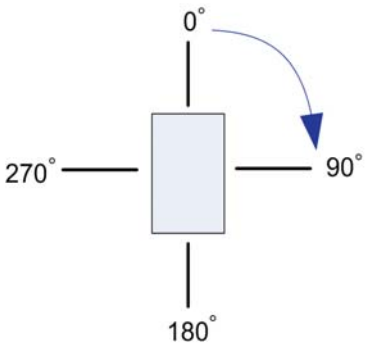
■ ELECTRICAL CHARACTERISTICS

ITEM		SPEC				
Frequency Range		2400 ~ 2485 MHz				
VSWR		3:1 Max				
Polarization		Linear				
Frequency [MHz]		2400	2425	2445	2465	2485
Gain [dBi]	Peak	2.32	2.83	2.52	2.14	1.90
	Average	-1.25	-0.82	-1.07	-1.66	-2.05
Efficiency [%]		75.02	82.85	78.36	68.32	62.45



ELECTRICAL CHARACTERISTICS (2D)

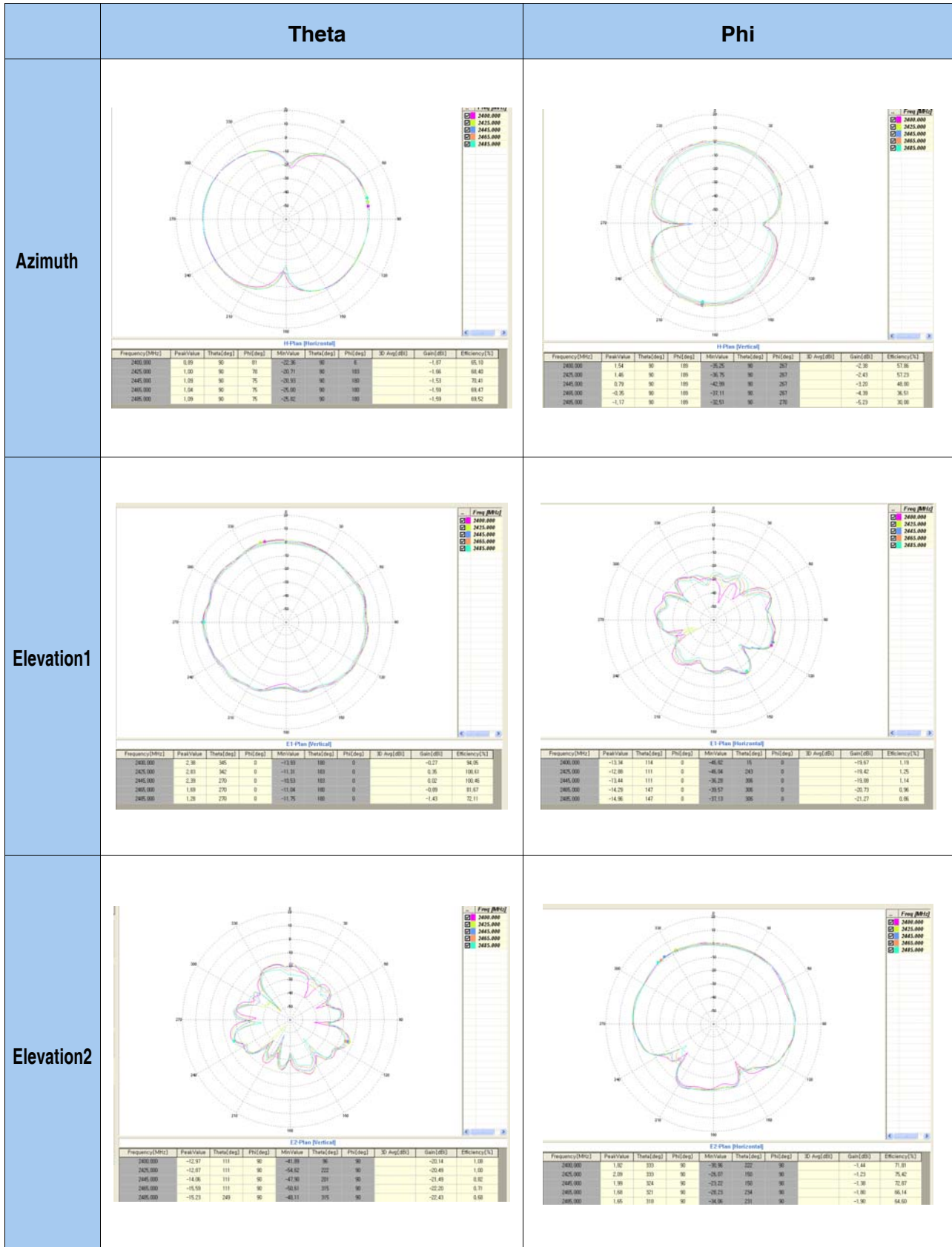
2D Measurement				
Gain	Azimuth	Theta	Peak	1.09
			Average	-1.53
		Phi	Peak	1.54
			Average	-2.38
	Elevation 1	Theta	Peak	2.83
			Average	0.35
		Phi	Peak	-12.88
			Average	-19.42
	Elevation 2	Theta	Peak	-12.97
			Average	-20.14
		Phi	Peak	2.09
			Average	-1.23

Azimuth Plane	Elevation1 Plane	Elevation2 Plane
		
Theta	Vertical field of measured plane	
Phi	Horizontal field of measured plane	

Dielectric Chip Antenna



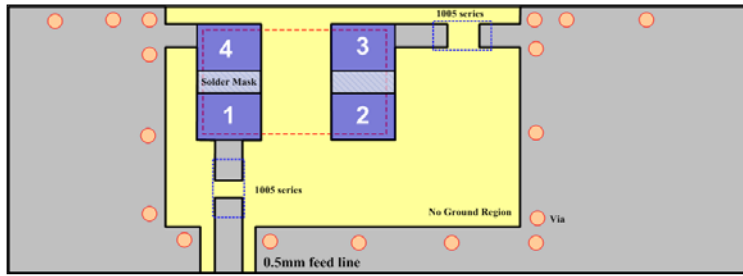
2D RADIATION PATTERN



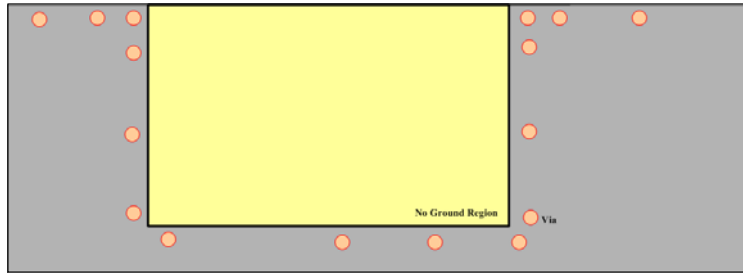
Dielectric Chip Antenna



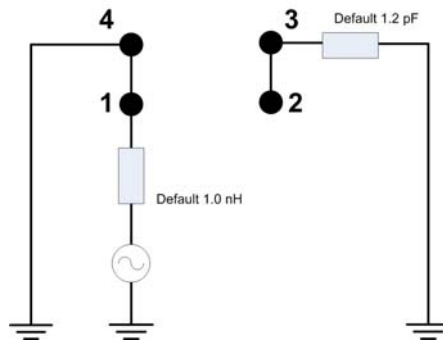
FEEDING METHOD (unit : mm, tolerance : ± 0.05)



< Top View >



< Bottom View >



< Default Condition Equivalent Circuit >

AutoCAD Drawing of Reference PCB Design

