

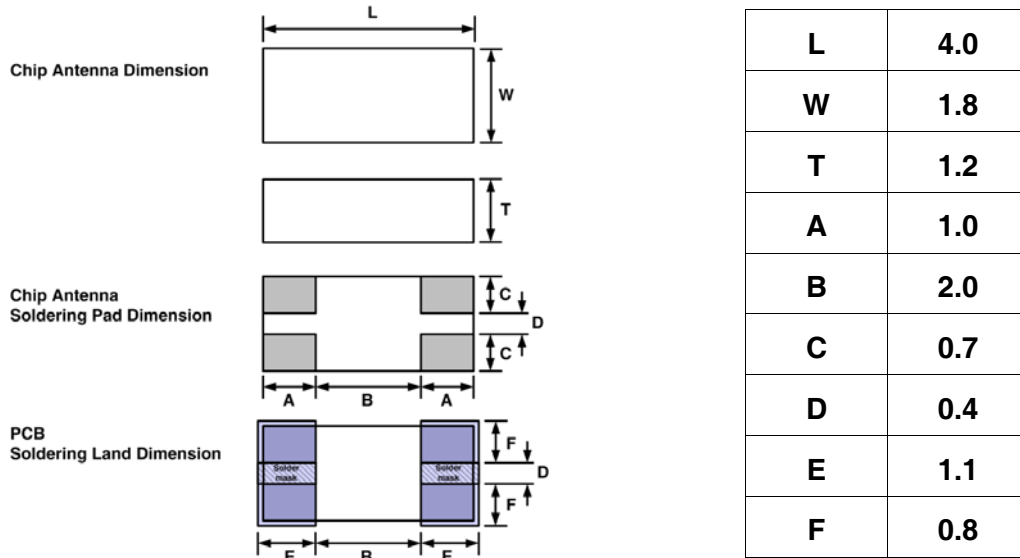
Dielectric Chip Antenna



■ P/N : ODBTPTR4018

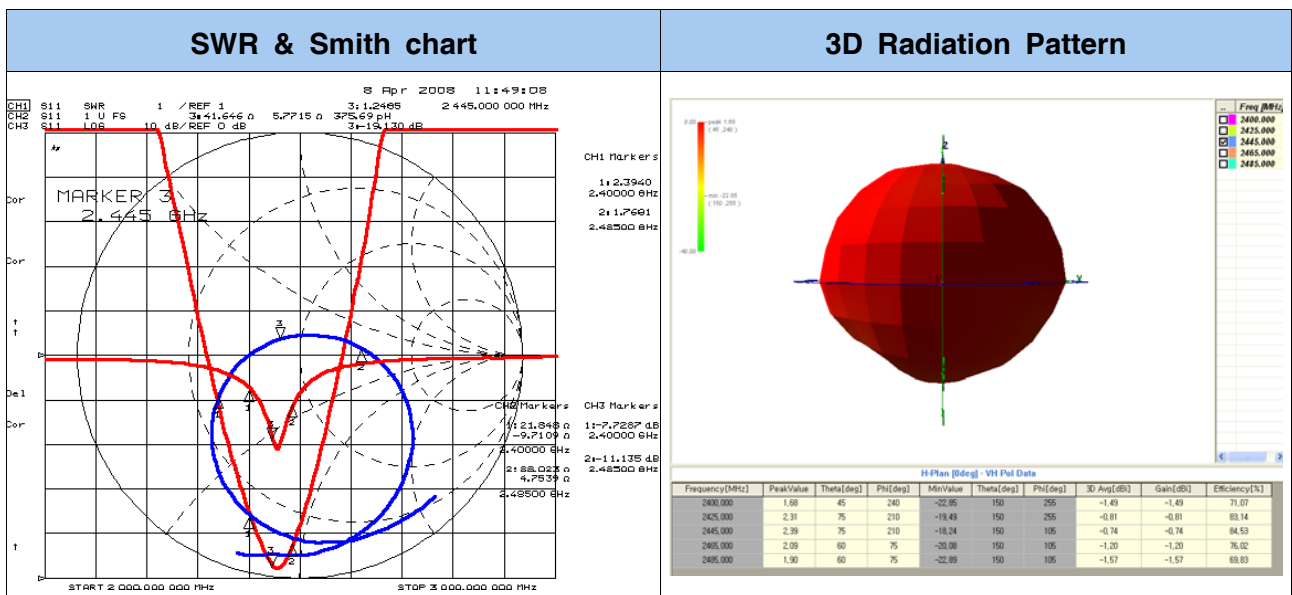
This specification covers the dielectric chip antenna ODBTPTR4018 used in Bluetooth

■ MECHANICAL DIMENSION (unit : mm, tolerance : ± 0.1)



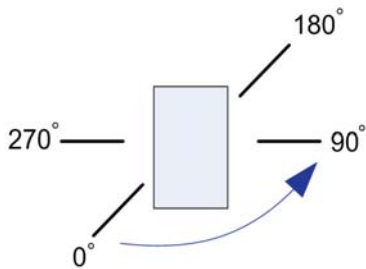
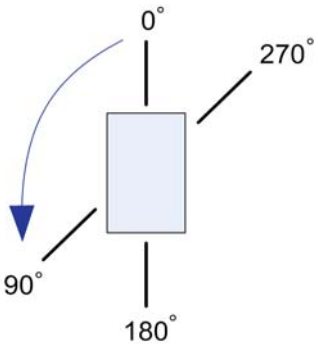
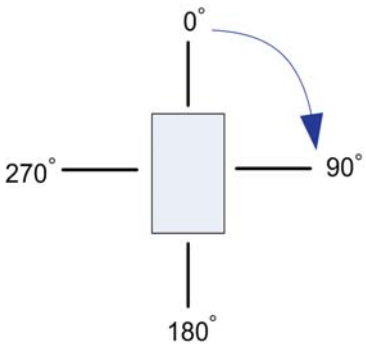
■ ELECTRICAL CHARACTERISTICS

ITEM		SPEC				
Frequency Range		2400 ~ 2485 MHz				
VSWR		3:1 Max				
Polarization		Linear				
Frequency [MHz]		2400	2425	2445	2465	2485
Gain [dBi]	Peak	1.68	2.31	2.39	2.09	1.90
	Average	-1.49	-0.81	-0.74	-1.20	-1.57
Efficiency [%]		71.07	83.14	84.53	76.02	69.83

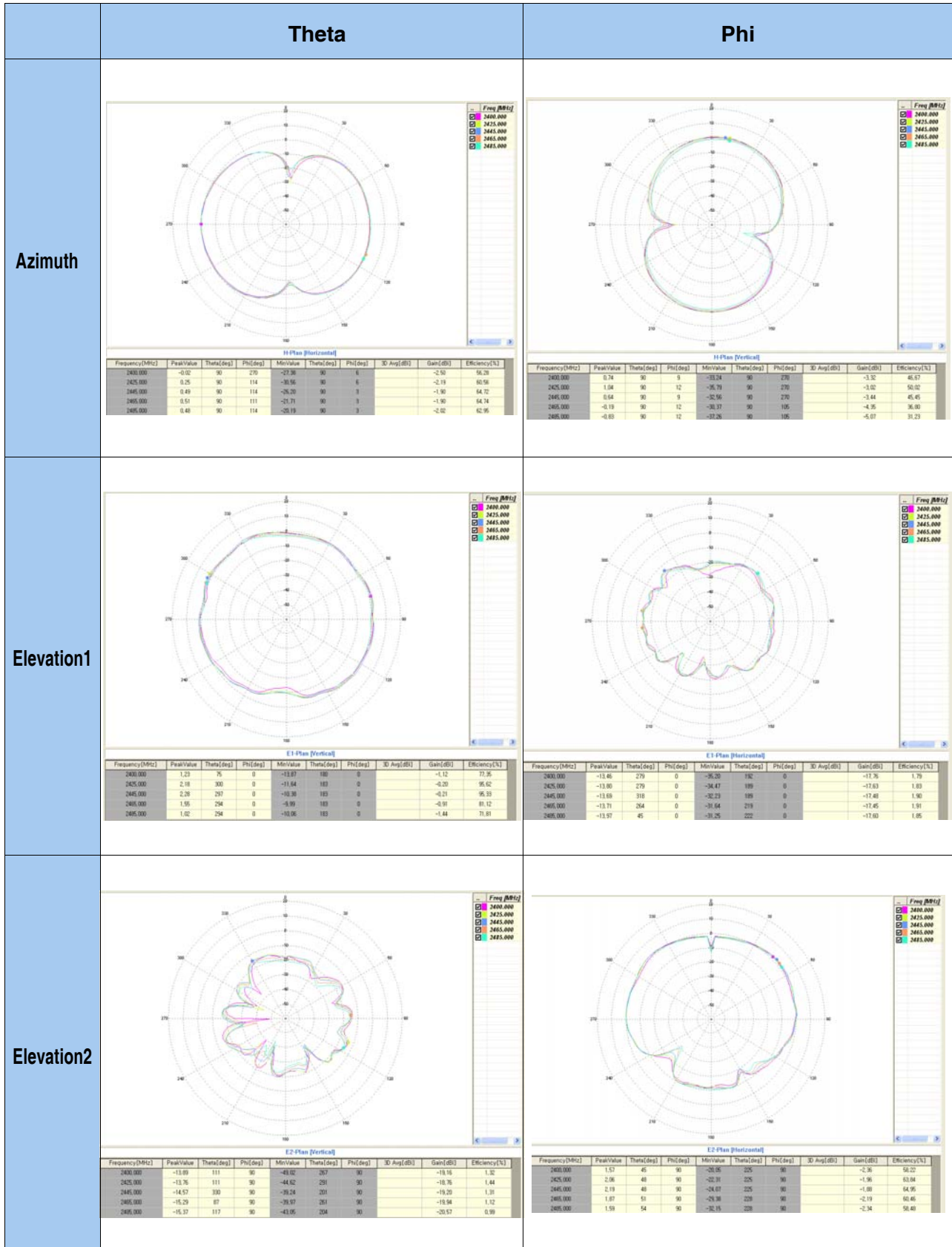


ELECTRICAL CHARACTERISTICS (2D)

2D Measurement				
Gain	Azimuth	Theta	Peak	0.51
			Average	-1.90
		Phi	Peak	1.04
			Average	-3.02
	Elevation 1	Theta	Peak	2.18
			Average	-0.20
		Phi	Peak	-13.71
			Average	-17.45
	Elevation 2	Theta	Peak	-13.76
			Average	-18.76
		Phi	Peak	2.19
			Average	-1.88

Azimuth Plane	Elevation1 Plane	Elevation2 Plane
		
Theta	Vertical field of measured plane	
Phi	Horizontal field of measured plane	

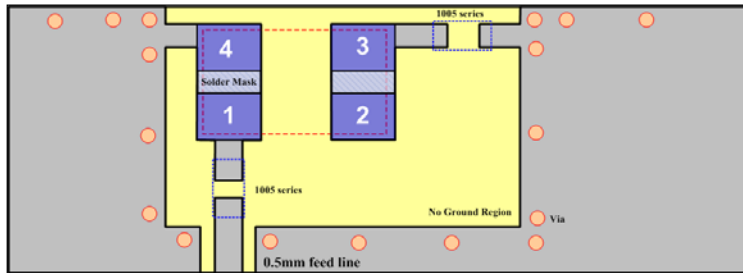
2D RADIATION PATTERN



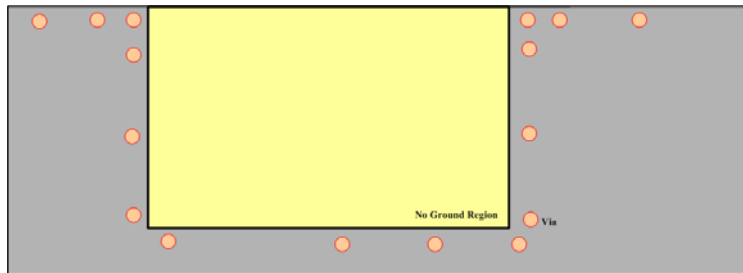
Dielectric Chip Antenna



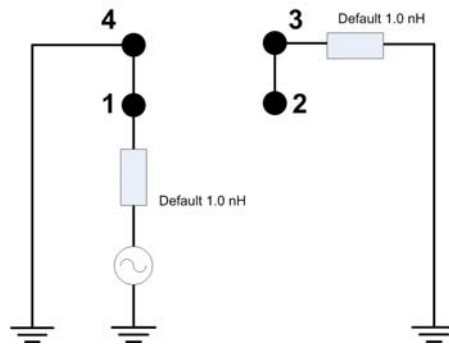
■ FEEDING METHOD (unit : mm, tolerance : ± 0.05)



< Top View >



< Bottom View >



< Default Condition Equivalent Circuit >

■ AutoCAD Drawing of Reference PCB Design

