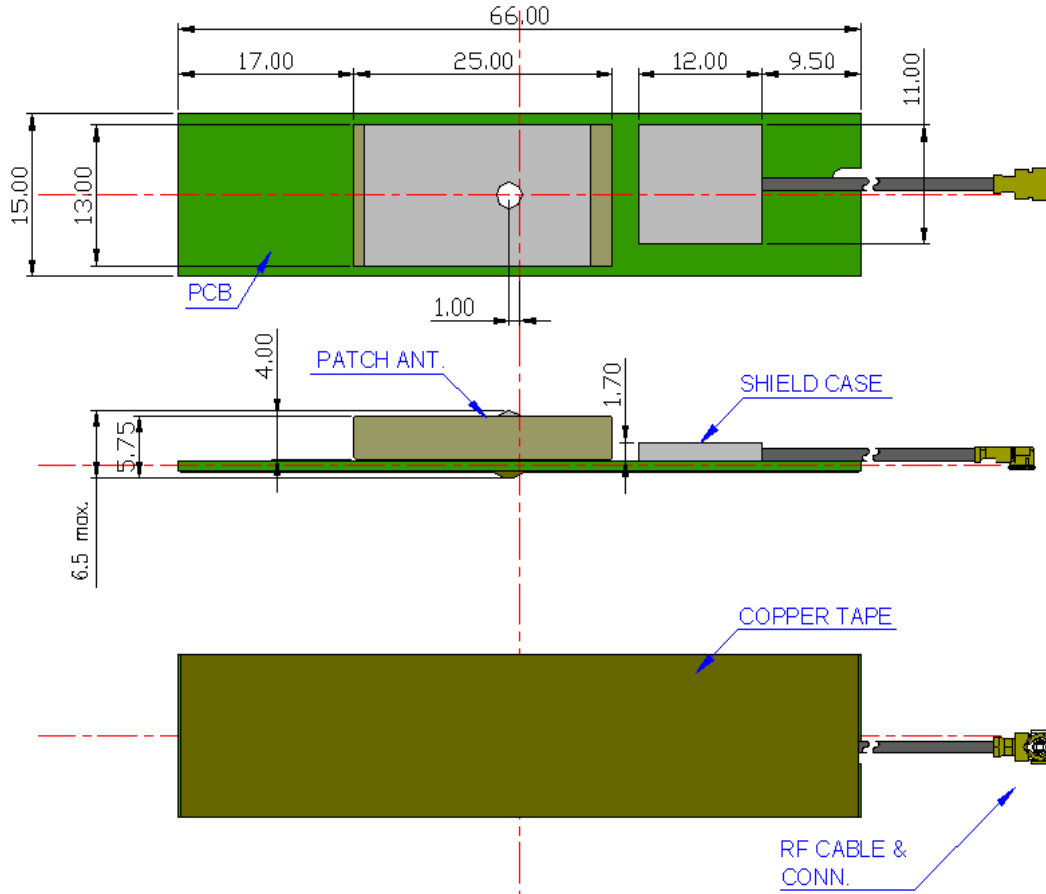


PARTRON GPS Active Ant.

Ver 1.0- SEP, 2007

■ P/N : **MAGBC133** series - type A

■ MECHANICAL DIMENSION (unit : mm)



■ ELECTRICAL CHARACTERISTICS

	ITEM	Spec.	Remark
Antenna	1) Operating frequency	1575.42 ± 1.023 MHz	
	2) Gain @ Zenith	3.3 dBi typ.	@ 58x19mm Ground plane
	3) Polarization	R.H.C.P	
	4) Size	25x13x4 mm	
LNA	5) Gain	15 / 18 / 24 dB	Changeable by user request
	6) Noise Figure	2.5 dB max.	@ normal temperature
	7) Outband Rejection	20 dBc min.	@ fc ± 100MHz
	8) Output V.S.W.R	2.0 : 1 max.	
Overall	9) Overall Gain	15~24 dBi	Includes cable loss
	10) Operating Voltage	3.0 Vdc	± 0.3V
	11) Consumption Current	10 mA typ.	
	12) Size	66x15x6.5 mm	Changeable mechanical & electrical spec by user request
	13) RF Cable	RF coaxial Φ0.8, 1.13, 1.3	
	14) RF Connector	Hirose / I-pex / Giga-lane	



PARTRON GPS ANTENNA LAB.

22-6, Seokwoo-dong, Hwaseong-si, Gyeonggi-do, Korea 445-170

Tel. 82-31-201-7700 | Fax. 201-7800 | www.partron.co.kr