

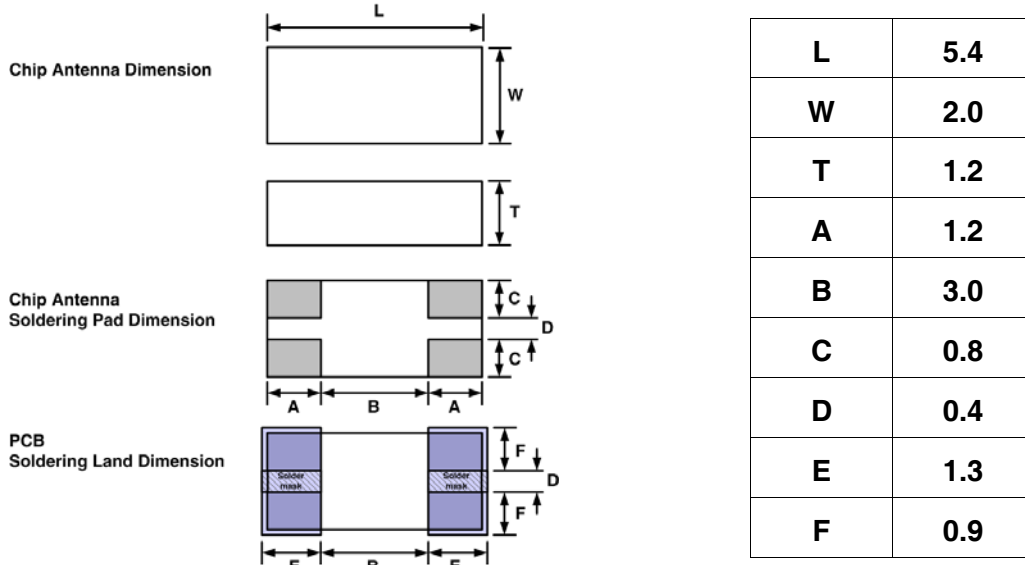
# Dielectric Chip Antenna



■ P/N : ODBTPTR5420

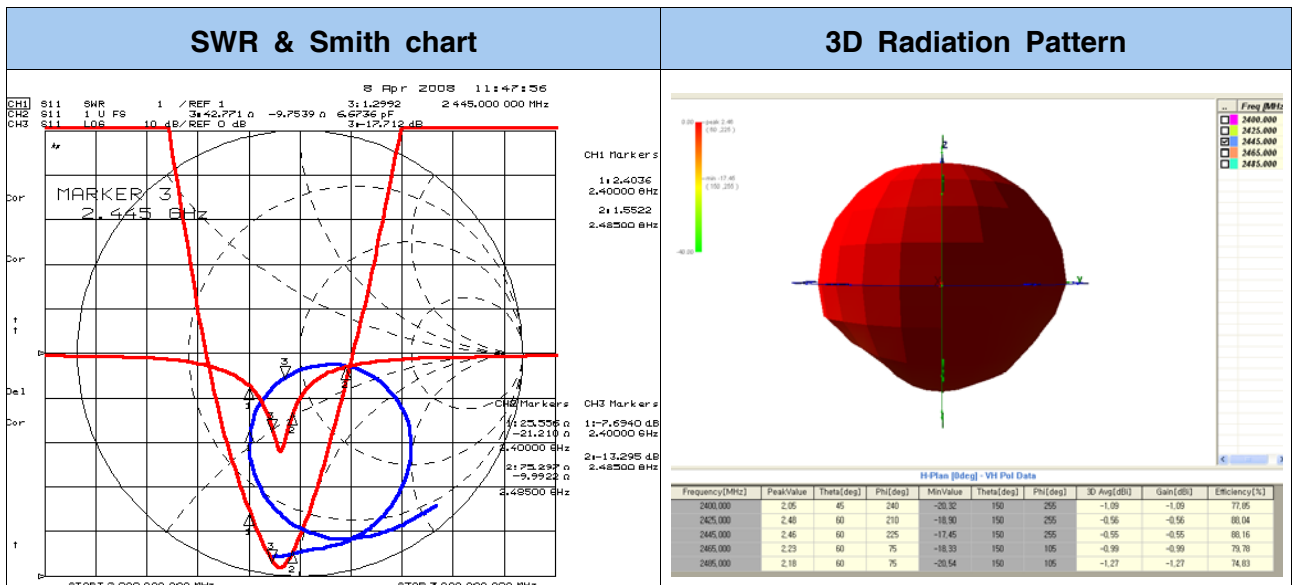
This specification covers the dielectric chip antenna ODBTPTR5420 used in Bluetooth

■ MECHANICAL DIMENSION (unit : mm, tolerance : ± 0.1)



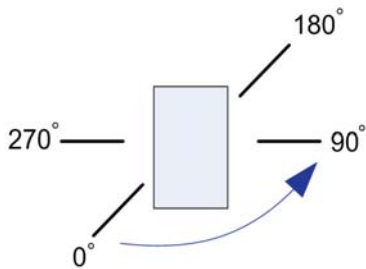
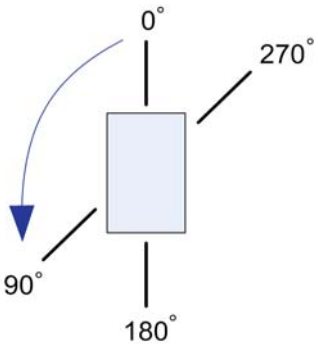
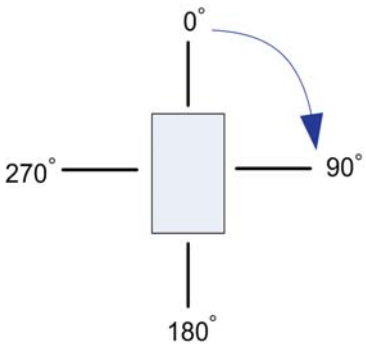
■ ELECTRICAL CHARACTERISTICS

ITEM		SPEC				
Frequency Range		2400 ~ 2485 MHz				
VSWR		3:1 Max				
Polarization		Linear				
Frequency [MHz]		2400	2425	2445	2465	2485
Gain [dBi]	Peak	2.05	2.48	2.46	2.23	2.18
	Average	-1.09	-0.56	-0.55	-0.99	-1.27
Efficiency [%]		77.85	88.04	88.16	79.78	74.83



## ELECTRICAL CHARACTERISTICS (2D)

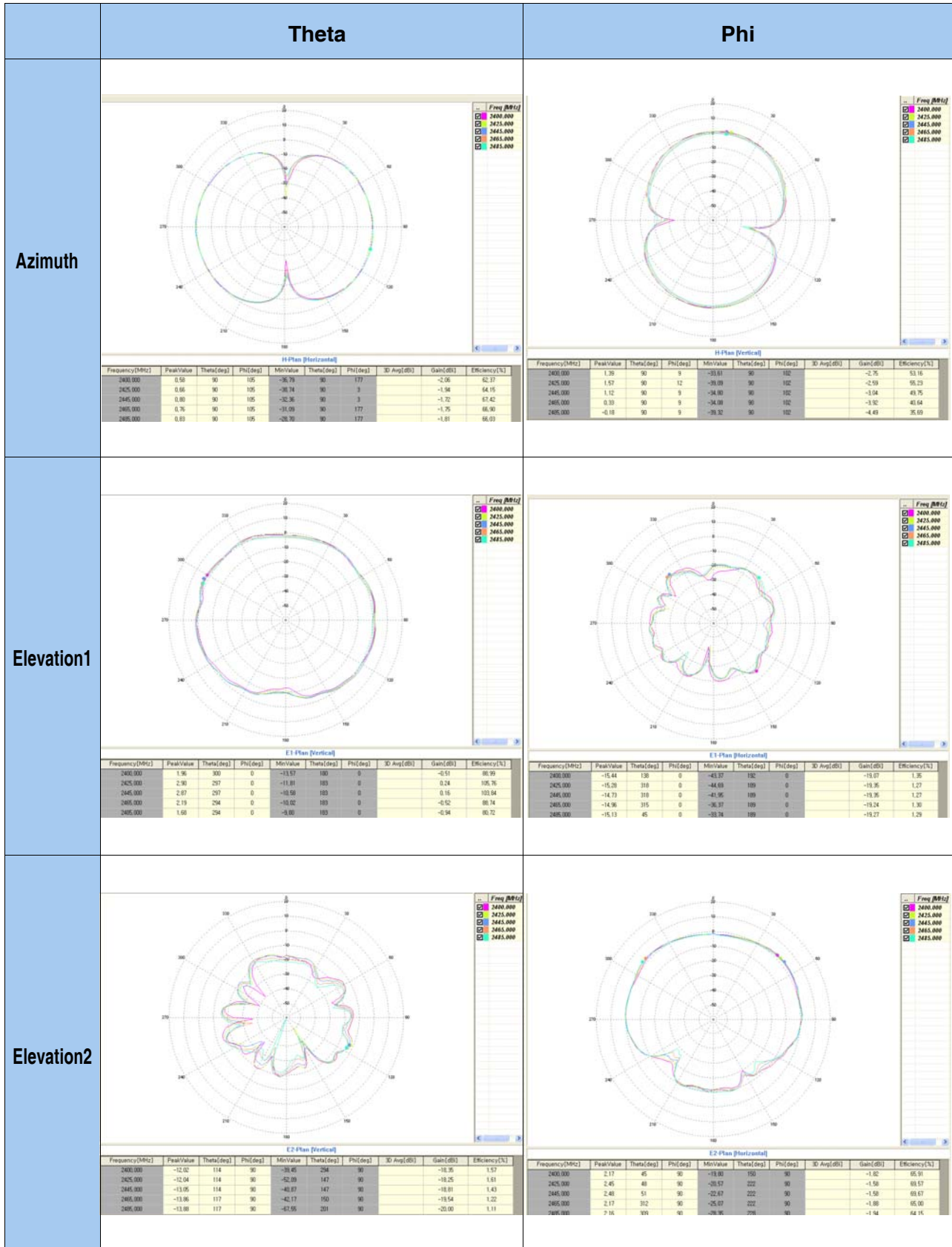
2D Measurement				
Gain	Azimuth	Theta	Peak	0.80
			Average	-1.72
		Phi	Peak	1.57
			Average	-2.59
	Elevation 1	Theta	Peak	2.90
			Average	0.24
		Phi	Peak	-15.44
			Average	-19.07
	Elevation 2	Theta	Peak	-12.04
			Average	-18.25
		Phi	Peak	2.48
			Average	-1.58

Azimuth Plane	Elevation1 Plane	Elevation2 Plane
		
Theta	Vertical field of measured plane	
Phi	Horizontal field of measured plane	

# Dielectric Chip Antenna



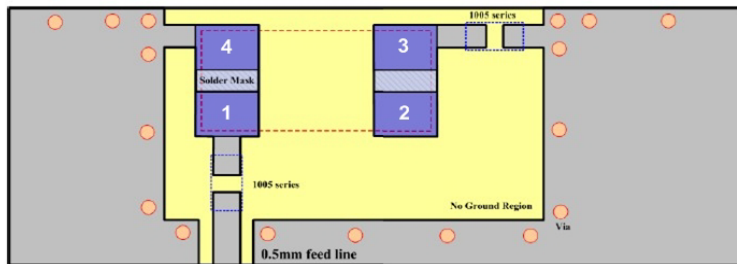
## 2D RADIATION PATTERN



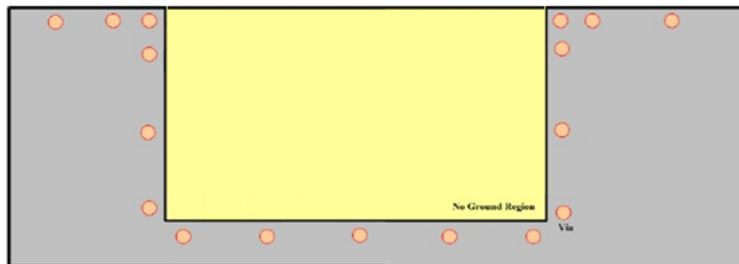
# Dielectric Chip Antenna



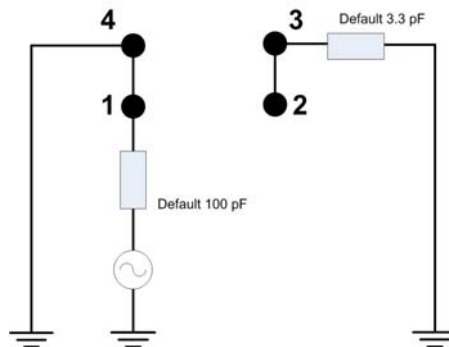
## ■ FEEDING METHOD (unit : mm, tolerance : ± 0.05)



< Top View >



< Bottom View >



< Default Condition Equivalent Circuit >

## ■ AutoCAD Drawing of Reference PCB Design

